

esthetic.line

## **Livento<sup>®</sup> press and Soprano<sup>®</sup> 10**

<b>DE</b>	<b>Gebrauchsanweisung</b>	Deutsch	1
<b>FR</b>	<b>Mode d'emploi</b>	Français	25
<b>EN</b>	<b>Instructions for Use</b>	English	49
<b>ES</b>	<b>Instrucciones de uso</b>	Español	73
<b>RO</b>	<b>Instrucțiuni de utilizare</b>	Română	97
<b>PL</b>	<b>Instrukcja użycia</b>	Polski	121
<b>УКР</b>	<b>Інструкція для застосування</b>	Українська	145
<b>ZH</b>	<b>使用說明書</b>	繁體中文	169
<b>KO</b>	<b>사용 설명서</b>	한국어	191
<b>TR</b>	<b>Kullanım Kılavuzu</b>	Türkçe	214
<b>AR</b>	<b>دليل الاستخدام</b>	العربية	238
<b>IT</b>	<b>Istruzioni per l'uso</b>	Italiano	262



**7 Contraindications**

- Free-end bridges and extension pontics
- 3-pontic bridge in molar region
- Patients with profoundly reduced residual dentition
- Falling below the necessary connector and minimum strengths
- Combination with materials outside the described Livento® press and Soprano® 10 product system and/or with materials from third party suppliers
- As a matter of principle, all indications not listed are to be regarded as contraindications.
- Patients who are unable to keep the regularly required check-up appointments for health reasons.
- Patients with bruxism or other para-functional habits.
- Patients with allergies to materials used in the product, see Section 19.
- Existing clinical picture in the patient's mouth does not permit the correct application of the products.

**8 Compatible products**

To fabricate the finished denture, a number of general laboratory supplies are required in addition to the products listed under Section 29. The following gives a selection of materials that Cendres+Métaux SA offers in its portfolio.

08052138	Polyurock Kit	08055014	Livento® invest Pulver (50 x 100 g)
08052135	Polyurock Catalyst	083739	Livento® invest Flüssigkeit (1000 ml)
08052137	Polyurock Mixer	080181	CM-Lötmasse (4 kg)
08052149	ABF Wax Universal	080229	CM-Lötpaste
08052150	ABF Wax Creativ light	08052307	Legabril Diamond (50 g)
08052151	ABF Wax Creativ dark		
08052154	ABF Wax Special		
08052148	ABF Wax Margin		
08052153	ABF Wax Position		
08052152	ABF Wax Tecno		

**9 Qualification of the specialist**

Expertise in professional dentistry and dental technology is assumed. The current Instructions for Use must be available at all times and be completely read and understood before the first application. The fabrication of dentures and their maintenance may only be performed by qualified specialists.



Important information for the specialist



Warning symbol for increased caution

**10 Prescription**

Federal laws in the USA prohibit the use by or sale to unlicensed dentists.

**11 Side effects**

This product must not be used in patients with allergies or suspected allergies to materials used in the product (see Section 19), or only after prior allergological clarification.

Auxiliary instruments may contain nickel.

If applied as intended, side effects can be excluded.

**12 Warnings****Magnetic resonance (MR) environment**

The device has not been evaluated for safety and compatibility in the MR environment.

The product has not been tested for heating or migration in the MR environment.

**13 General information**

N/A

**14 Preventive measures**

- The product components are supplied non-sterile. For more information see Section 16 "Reprocessing".
- Only original tools and parts may be used for this work. For information and additional details, please contact your Cendres+Métaux SA representative.
- Before any procedure, ensure that all required product components are available in sufficient quantity.
- For your own safety, always wear suitable protective clothing. In particular when grinding, we recommend wearing protective goggles and a dust mask as well as the use of a suction unit.
- Secure parts against aspiration.
- The mechanical cleaning by patients with a toothbrush and toothpaste may lead to premature wear.


**15 Single use**

Products that are intended for single use and are labelled "single-use" accordingly are subject to a certain amount of stress, increased wear, and even loss of functionality during their use.



Multiple application of products labelled «single use» was not tested. This can impair the safety, function and performance of the products as well as increase the risk of transmitting infections.

**16 Reprocessing**

 The prosthetic work, including all system components, must be cleaned, disinfected and, if appropriate, sterilised prior to each work step. Materials made of metal alloys, high-performance polymers (Pekkton®) and ceramics are suitable for steam sterilisation. With the exception of Pekkton®, components made of plastics are not suitable for steam sterilisation. Consider published national guidelines when selecting a disinfection and sterilisation process and the Instructions for Use “Reprocessing of surgical and prosthetic products” (www.cmsa.ch/docs).

**17 Scope of application**

The Livento® press ceramic und Soprano® 10 veneering ceramic are processed in the dental laboratory with already well known, established dental ceramic instruments, processing instruments, mixing plates, furnaces and associated accessories. This means that no new, product-specific accessories are required for the use of the products.

**18 Procedure**

**18.1 Description of the ceramic materials**

Characteristics	
Ceramic material	Description
Frame Modifier	Highly fluorescent. Optimises the bond of veneer ceramic on zirconium oxide. ⚠ Use special Frame Liquid (red liquid)! Do not use with Livento® press.
Margin	Tooth-coloured shoulder material for zirconium oxide veneers. High opacity and fluorescence for increased depth effect. ⚠ Using normal modelling liquids. Do not use with Livento® press.
Opaque Dentine	Opacity level is approx. 90 %. Covers extremely well. Available in the respective tooth shades.
Dentine	Opacity level is approx. 70 %. Natural light refraction. Material in red identification colour.
Enamel	Very similar to natural enamel, with an opacity of around 50 %. Material in blue identification colour.
Enamel Effect	Is not colour-specific and can be used for all tooth shades, depending on the desired effects.
Enamel Effect Enhancer	Semi-transparent material for mixing with Enamel and Enamel Effect.
Opal	Natural opalescence in four stages and hazes.
Opal Effect	Natural opalescence, more transparent than Opal material. Special to the range is the Clear material.
Fossa, Cuspid	For accenting cusps (whitish) and fissures (orange).
Mamelon	Can be mixed with all ceramic materials. For characterisation of the mamelon structures in the incisal region.
Flu-Shade	Highly fluorescent stain corresponding to the base colour for use as framework colour or glazing colour. Universal stain for all ceramics. ⚠ Can only be used superficially for high melting ceramics. Mix colour paste well before use!
Flu-Stain	Highly fluorescent stain. Universal stain for all ceramics. ⚠ Can only be used superficially for high melting ceramics. Mix colour paste well before use!

**18.2 Preparation notes**

- In principle: anatomically reduced tooth shape
- Step preparation with rounded inner edge or preparation of a chamfer
- Generally avoid edges and corners in the preparation
- Depending on the indication, only remove so much hard tooth substance to allow remaining within the following minimal wall thicknesses, the connector cross-sections for bridges and the maximum widths of the pontics.

**18.3 Minimum wall thicknesses**

Overview on the minimum wall thicknesses (in mm) and connector cross-sections (in mm <sup>2</sup> )									
Processing technique		Veneer	Inlay	Onlay	Partial crown	Anterior tooth crown	Posterior tooth crown	Anterior tooth bridge (max. 3-pontic)	Posterior bridge (max. 3-pontic), premolar region
Staining technique	circular	0.3–0.6	1.0	1.5	1.5	1.2	1.5	1.2	1.5
	incisal/occlusal	0.4–0.7	1.0	1.5	0.8	1.5	1.5	1.5	1.5
Reduced layer technique	circular	0.5	–	1.5	1.5	1.2	1.5	1.2	1.5
	labial/occlusal	0.4	–	0.8	0.8	0.4	0.8	0.8	0.8
Layer technique	circular	–	–	–	–	0.6	0.8	0.8	0.8
	incisal/occlusal	–	–	–	–	0.6	0.8	0.8	0.8
	Principle	–	–	–	–	Supporting tooth/cusp form			
Maximum width of bridge pontic								11	9
Connector cross-sections								16	16

 At least 50 % of the entire wall thickness must be made up of the high-strength pressed ceramic Livento®! press!

**18.4 Model preparation**

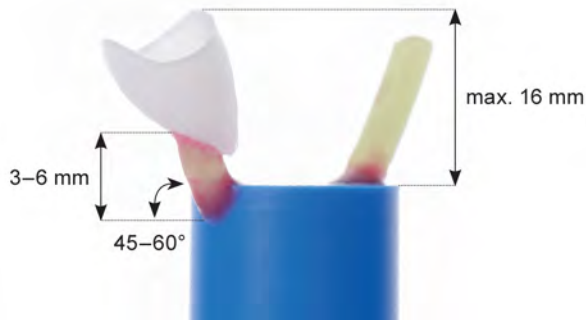
The master model is created as usual. In the case of plaster models it is useful to first harden the surface with a sealer and without a change in volume. Then the spacer is applied in several layers depending on the preparation. In the case of veneers, partial crowns and crowns, apply the spacer in two layers up to a maximum of 1 mm to the preparation margin. In the case inlays and onlays apply up to three layers to a maximum if 1 mm above the cavity base.

**18.5 Waxing**

Model the restoration with a residue-free burning wax (ash-free) according to the desired processing technique (layering, cutback or staining technique) while maintaining the minimum wall thicknesses. Special attention is to be paid to the preparation margin: do not over-model to avoid time-consuming finishing after pressing.

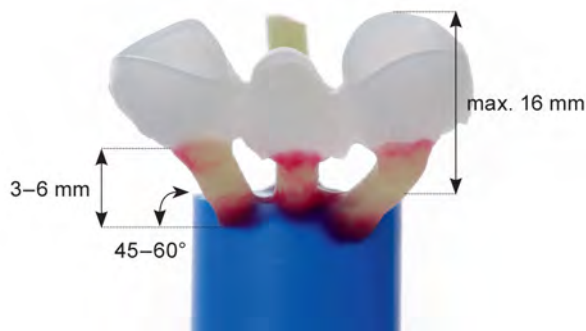
**18.6 Sprueing**

**Crown**



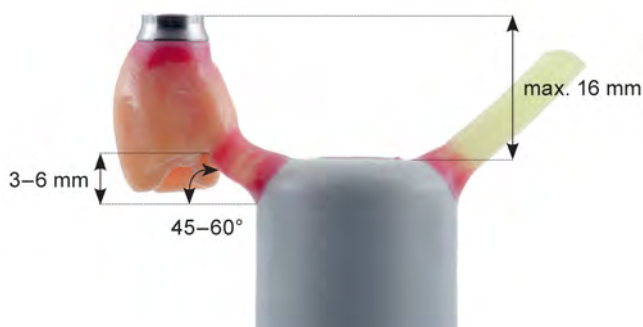
Tip: When sprueing one crown only, fit a pressure compensation channel!

**Bridge**




Tip: When sprueing one bridge only, fit a pressure compensation channel!

**Hybrid abutment crown**



Tip: When sprueing one hybrid abutment crown only, fit a pressure compensation channel!

 Invest without abutment!

**18.7 Information on sprueing**

Press stamp	Diameter 13 mm Livento® press (Cendres+Métaux SA) Disposable press stamp, article no. 08055017
Mould systems	Can be processed with all conventional 13 mm mould systems.
Size of the investment ring	100 g, 200 g or 300 g Recommendation: Pressing in an investment ring 200 g or 300 g, to reduce the risk of cracks or chips of the investment material. Furthermore, this improves temperature retention and increases the precision of the fit.
Diameter of the wax wire	2.5–4 mm
Length of press channel (wax wire)	3–6 mm
Sprue point at the object	At the thickest part of the object
Sprue angle to the object	Axial in pressing direction
Sprue angle to investment ring base	45–60°
Design of sprueing points	Trumpet shaped, without edges and angles
Distance between several objects	At least 3 mm
Distance to margin of investment ring	At least 10 mm
Overall length of wax object and press channel	Maximum 16 mm
Object position in investment ring	In general, the cervical edges of the waxing face towards the centre.
Pressure compensation channel	Recommendation: when pressing single objects (crown or bridge!) 180° opposite to the object, in the length of the object
Sprued angle for the hybrid abutment crown	Position of the screw channel parallel to the press stamp

**18.8 Investing**

Investing can be performed with both with the fast pressing technique (speed technique) as well as the conventional preheating technique. Please weigh the wax object including the press channel to avoid pressings with too little material. This can either be done by determining the difference between the unloaded and loaded investment ring or by weighing the wax objects incl. the wax wire.

- Up to maximum 0.9 g wax weight: one press blank
- Up to maximum 1.9 g wax weight: two press blanks

**Investment material Livento® invest**

Manufacturer: Cendres+Métaux SA, Switzerland  
 Catalogue No. 08055014 (pack with 50 bags of 100 g)  
 Catalogue No. 083739 (1 litre liquid concentrate)

**Description**

- Special investment material for lithium disilicate and other pressable ceramics.
- The fabrication of refractory stumps is also possible.

Mixing ratio: liquid mixture 26 ml per 100 g powder

**Concentrate mixtures**

- 40 – 60% expansion fluid for inlays, onlays, depending on preparation and size
- 60 – 70% expansion fluid for single crowns
- 70 – 85% expansion fluid for posterior and anterior tooth bridges
- 100% expansion fluid for refractory stumps.

 The greater the proportion of the concentrate in the liquid, the higher the expansion values

 Observe the manufacturer's Instruction for Use enclosed in the packaging for correct processing of the investment material and the timing instructions!



Set shaker to minimum stage. Fill material carefully but swiftly to the rim of the object. Then fill the object carefully bubble-free until it is covered completely.



Once the object is covered, switch off the shaker and fill the investment ring up to the marking with the remaining investment material. Slightly push out the silicone rim of the investment ring and place the ring lid and rotate once clockwise by 180° (elimination of bubbles).


### 18.9 Preheating

Check temperature precision of the burnout furnace regularly.

 Please follow the manufacturer's work instructions.

After setting of the investment material according to manufacturer' indications, the investment ring is prepared for preheating.


1. Carefully turn and remove the investment ring.
2. Carefully turn and remove the investment ring base as well.
3. Remove rough spots dry with a plaster knife or a belt grinder.
4. Please make sure that no investment material enters the press channel.

 The investment ring base should have a 90° angle and be situated flat on the investment ring holder in the press furnace. Blanks and disposable press stamps may not be preheated.


Positioning of the investment rings in the preheating furnace

- In case of a ribbed floor (furnace without floor heating!), the investment ring can be placed directly with the opening facing downwards.
- In case of flat floors, please make sure that the wax burn-out occurs outside of the investment ring, e.g. by tipping the investment ring in direction of the rear wall.
- In case of furnaces with floor heating, please ensure that the investment ring has approx. 10 mm distance from the floor.

### 18.10 Pressing

-  – The press furnace must be sufficiently preheated before pressing in order to avoid incomplete pressing due to the cooled investment ring.  
 – Wear gloves for heat protection.  
 – Depending on the age and condition of the press furnace and the number of firing cycles performed, deviations in given pressing temperatures are possible for the same device types. Recommendation: conduct a pressing trial.

As soon as the press furnace is ready for pressing, remove the preheated investment ring from the preheating furnace and place in the immediate vicinity of the press furnace. While the press furnace opens, immediately load the investment rings. First insert the required press blank, then the press stamp.

-  – Insert the press blank into the investment ring with the unprinted side first.  
 – Use a maximum of two press blanks per press channel.  
 – When using reusable Al<sub>2</sub>O<sub>3</sub> press stamps it may be necessary to adjust the pressing temperature.

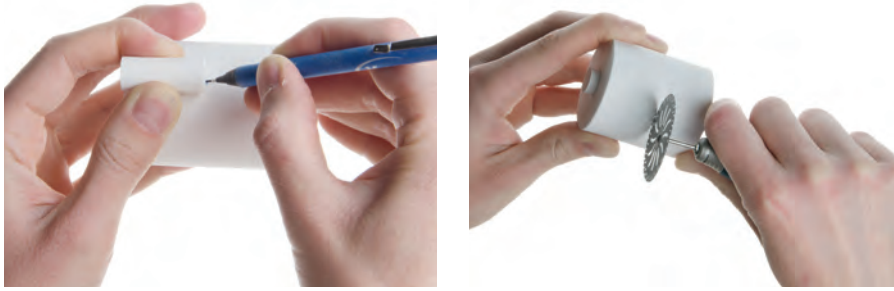
Then place the loaded investment ring upright immediately on the firing table of the press furnace and start the programme according to the pressing programmes listed in the following. After completion of the pressing programme, immediately remove the investment ring from the press furnace with ring tongs and place on a cooling grid. Cooling down to room temperature should be performed in a draught-free area. Cooling takes approx. 60 minutes and must not be accelerated.

#### Pressing programmes (reference values) with Livento® press

	Starting temperature	Temperature rise	Final temperature	Dwell time	Pressing time	Vacuum start	Pressing pressure
	°C	°C	°C	min	min	°C	
Dekema press-i-dent (100 g)	700	60	910	20	Automatic	700	Level 5
Dekema press-i-dent (200 g)	700	60	920	20	Automatic	700	Level 5
Ivoclar Programat (100 g)	700	55	910	15	Automatic	700	E 300
Ivoclar Programat (200 g)	700	60	912	25	Automatic	700	E 300
Zubler Vario Press (100 g)	700	60	900	18	3	700	low
Zubler Vario Press (200 g)	700	60	915	20	3	700	low
Dentsply Multimat NTxpress (100 g)	700	60	930	15	3	700	–
Dentsply Multimat NTxpress (200 g)	700	60	950	18	3	700	–



18.11 Divesting and cleaning



Mark the end of the press piston. Separate the excess investment material with a large, suitable cutting disk. Further rough divestment can be performed with Al<sub>2</sub>O<sub>3</sub>, grain 50 µm - 110 µm, at 4 bar pressure. Alternatively, waterjet devices such as, for example, Atlantis by Effegi Brega can be used for efficient and health-caring divestment.



The pressed crowns may not be sandblasted!

Subsequent fine divestment is performed for the investment material Livento® invest with glass beads 50 µm and a pressure of 2.5 to 3 bar. If the correct blasting direction and distance of the blasting material are complied with, even the most delicate margins will not be damaged. When using Livento® invest, subsequent removal of the reaction layer with an etching liquid in the ultrasonic bath is no longer required. This saves time.

18.12 Finishing

Only grinding instruments suitable for glass ceramics may be used for finishing Livento® press. Otherwise this can lead to chipping at the edges as well as to overheating.

- Limit grinding to an absolute minimum, i.e. avoid over-sizing when waxing the press object.
- Operate at low speed and with little force.
- Overheating of the ceramic is to be avoided under all circumstances.
- Rework the connection point of the press channel after separation.
- In the case of bridges, the connections may not be separated afterwards to avoid predetermined breaking points.
- When cleaning with steam, avoid overheating at the contact point between metal holder and ceramic.



Result of a crown after cleaning, without any finishing, with attached stump.



Separation from cone with diamond cutting disk.

Finishing of the crown is performed with grinding instruments suitable for glass ceramics.

Briefly blast the finished press restoration with Al<sub>2</sub>O<sub>3</sub> and 1 bar pressure and then clean thoroughly with a steam jet prior to staining or applying the veneer ceramic.

18.13 Livento® press and staining technique

Stain&Glaze shade table

Flu-Shade					Stain													
	A	B	C	D		pink												
Flu-Stain																		
	white	snow	cotton	cream	yellow	mango	orange	intense-orange	champagne	olive	shadow	navy-blue	dark-blue	brown	red-brown	gray	black	

\* also available in powder.

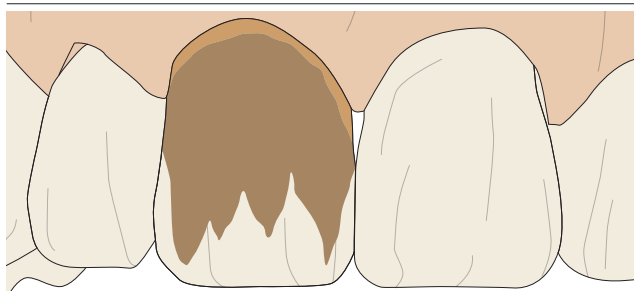


Staining pastes separate after longer non-use. Prior to application it is essential to mix well with the spatula included in the kit until homogenous and no more grains are visible. The surface then displays an even satin glow.



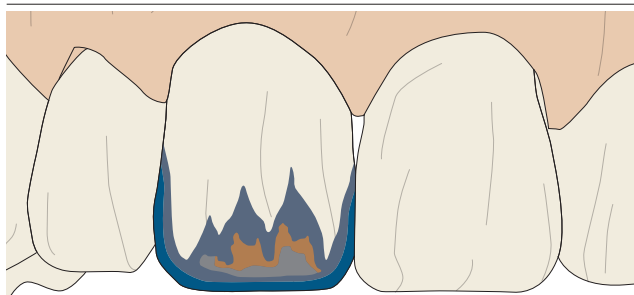
18.14 Basic instructions for staining (according to Robert Arvai, Chur)

Procedure in anterior region



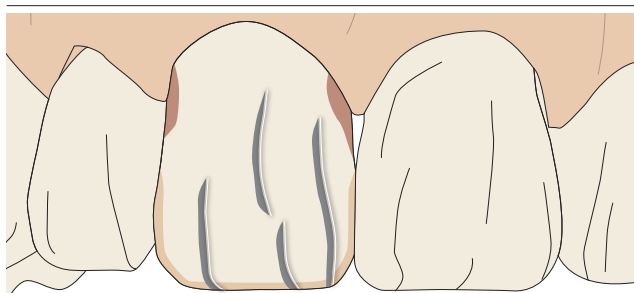
Step 1

- Flu-Shade A, B, C or D
- Flu-Stain orange or intense-orange



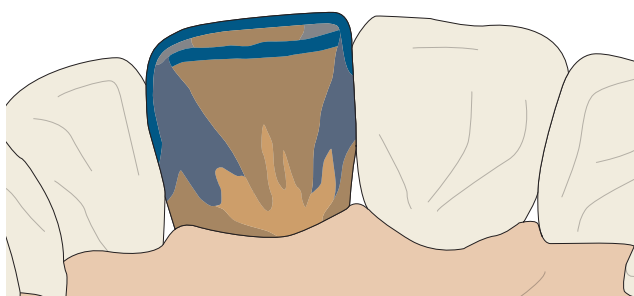
Step 2

- Flu-Stain navy-blue
- Flu-Stain dark-blue
- Flu-Stain intense-orange
- Flu-Stain gray



Step 3

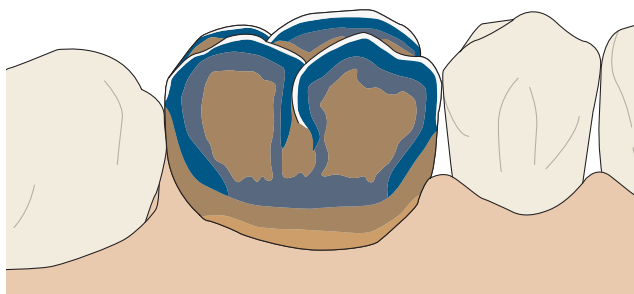
- Flu-Stain gray, staining direction distal
- Flu-Stain white and Flu-Stain orange mixed at 50 % each
- Flu-Stain pink, applied very thinly
- Flu-Stain white for enamel cracks



Step 4

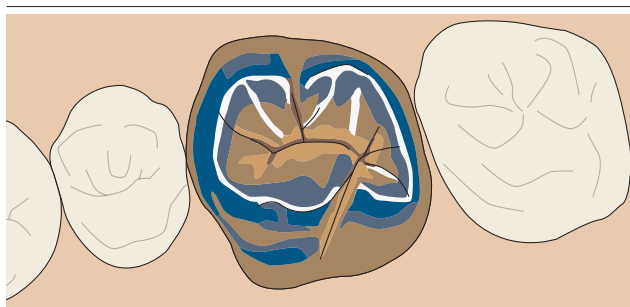
- Flu-Shade A, B, C or D
- Flu-Stain navy-blue
- Flu-Stain dark-blue
- Flu-Stain gray
- Flu-Stain orange or intense-orange

Procedure in posterior region



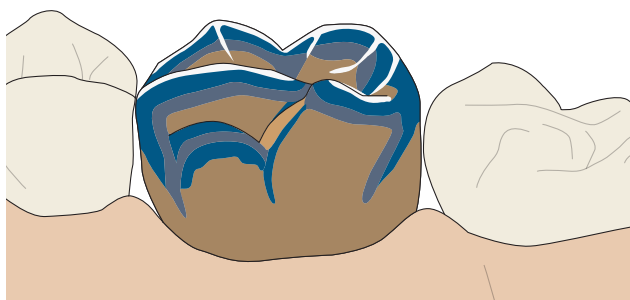
Step 1 (buccal)

- Flu-Shade A, B, C or D
- Flu-Stain orange or intense-orange
- Flu-Stain navy-blue
- Flu-Stain dark blue (grey for A3.5 and A4)
- Flu-Stain white



**Step 2 (occlusal)**

- Flu-Shade A, B, C or D
- Flu-Stain orange or intense-orange
- Flu-Stain navy-blue
- Flu-Stain dark blue (grey for A3.5 and A4)
- Flu-Stain white
- Flu-Stain brown



**Step 3 (palatal)**

- Flu-Shade A, B, C or D
- Flu-Stain orange or intense-orange
- Flu-Stain navy-blue
- Flu-Stain dark blue (grey for A3.5 and A4)
- Flu-Stain white

**Tips**

- Prior to staining, blast the crown matt with 50 µm Al<sub>2</sub>O<sub>3</sub> and a maximum of 1 bar pressure.
- Apply colours (Shade and Stain) without the addition of glazing liquid if at all possible. This avoids clouding or washing of the colour towards the edge.
- Mix glazing material with a little glazing liquid.
- Suction the excess glaze from the posterior teeth occlusally from the fissures with a blotting paper point. Apply the shades from incisal to gingival in thin layers.

Firing table								
	Pre-drying	Closing time	Starting temperature	1st firing	2nd firing	Temperature rise	Vacuum start	Dwell time
	min	min	°C	°C	°C	K/min	°C	min
Stain	3	4	450	750	750	45	without	1
Glaze	3	4	450	750	750	45	without	1

The firing temperature depends on the framework material and the desired degree of gloss. The firing temperature can be increased up to 810° C.

**18.15 Livento® press veneered with Soprano® 10**

Shake tin well before every use. The mentioned firing temperatures are reference values and can differ by type of furnace and age of the device. Recommendation: conduct a firing trial.

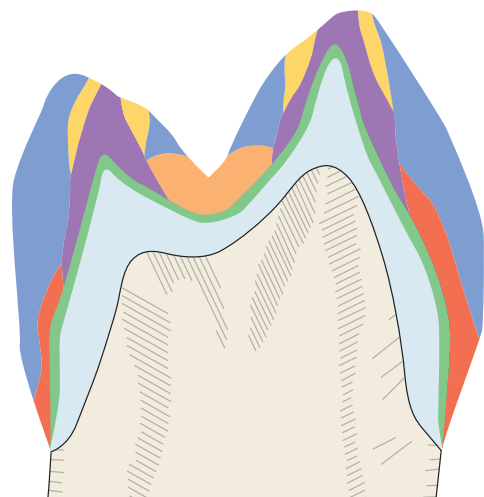
The stains can also be applied to the Livento® press framework prior to layering. Avoid any sharp edges when using the reduced layering technique (cut-back).

The ceramic material Repair (Enamel E2) can be used for small repairs of the reconstruction after glaze firing. Firing temperature is 720° C.

**Combination table Enamel**

	A					B				C				D		
	A1	A2	A3	A3,5	A4	B1	B2	B3	B4	C1	C2	C3	C4	D2	D3	D4
Enamel	1	2	2	4	4	1	2	3	4	2	2	3	4	1	2	3

**Layer pattern using molar as example**



- Dentine
- Dentine-Enamel mixture, mixed at 50 % each
- Enamel Effect
- Enamel
- Dentine-Fossa mixture, mixed at 50 % each
- Framework in Livento® press
- Wash with Stains + Dentine

Blast bridge framework with 50 µm Al<sub>2</sub>O<sub>3</sub> and clean with steam.



The bridge framework customised with stains.



Sprinkle Dentine powder directly on the still wet stain of the bridge framework. Remove excess.



The bridge framework sprinkled with Dentine powder ready for framework characterisation firing at 780° C.



Apply the Opaque Dentine to the cervical and lingual region.

Layering of the Dentine directly on the Opaque Dentine.



Application of a Dentine-Enamel mixture, mixed at 50 % each.



Apply the form anatomically reduced with a further minimal Enamel layer and condense the surface well with a «Big-Brush». Separate bridge connections interdentially down to the framework.

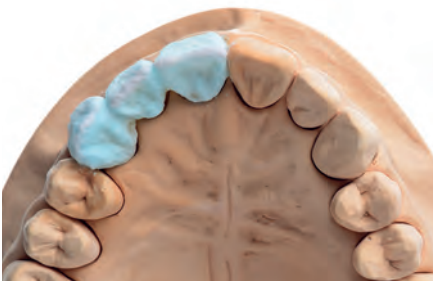
The work is now ready for the first Dentine firing which is performed at 2° C lower than the framework characterisation firing at 778° C.

After the first Dentine firing without any finishing. Colouring is now virtually completed.



This is now followed by a reduction to the size of the Dentine build-up.

Completion of the anatomical form via transparent and cutting materials with slight over-contouring. This is performed with alternate layering of the various materials. Interdental separation is performed down to the framework. Then the surface is condensed with a «Big-Brush». Final finishing of the surface and contour is performed with proven ceramic-bonded stones or diamonds. Second Dentine firing at 770° C.





**Option 1**


The restoration can be finished with stains and glaze. This is performed at a firing temperature of 740° C, without vacuum.



**Option 2**

Performing a «self-glaze» firing (without stains and glaze) at 785° C, with vacuum, but without dwell time. Subsequent manual polishing with suitable polishing agents is then essential to achieve the desired level of gloss.

<b>Firing table</b>								
(on Livento®press framework)	Pre-drying	Closing time	Starting temperature	1st firing	2nd firing	Temperature rise	Vacuum start	Dwell time
	min	min	°C	°C	°C	K/min	°C	min
Framework characterisation		4	450	780	–	45	450	1
Dentine/Enamel		4	450	778	770	45	450	1
Self-glaze		4	450	785	–	45	450	without
Glaze	3	4	450	720*	720*	55	without	1
Repair		4	450	720	–	45	450	1

 \* The firing temperature depends on the framework material and the desired degree of gloss. The firing temperature can be increased up to 750° C.

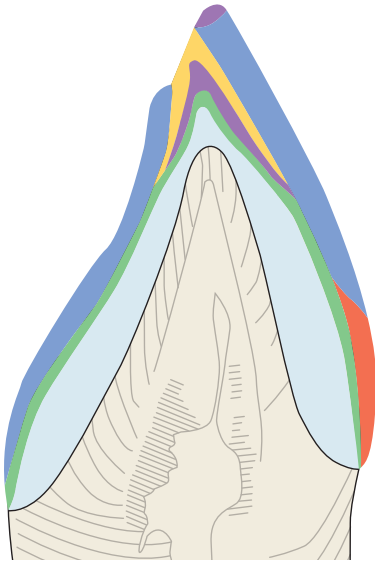
**18.16 Soprano® 10 veneered on zirconium oxide**

- The framework must have no sharp edges.
- For bigger and larger volume work, the firing temperature is to be increased by 20 – 30° C.
- For veneers on zirconium oxide, particularly in case of larger volume layers, delayed opening of the furnace (min. 2 minutes) is recommended after each main firing, starting with the Margin firings.

**Combination table**

	A					B				C				D			
	A1	A2	A3	A3,5	A4	B1	B2	B3	B4	C1	C2	C3	C4	D2	D3	D4	
Frame Modifier	A	A	A	A	A	B	B	B	B	C	C	C	C	D	D	D	
Enamel	1	2	2	4	4	1	2	3	4	2	2	3	4	1	2	3	

Layer pattern using anterior tooth as example



Cross-section



from labial

- Dentine Effect, various mixtures
- Dentine-Enamel mixture, mixed at 50 % each
- Effect materials
- Enamel
- Wash with Stains + Dentine
- Framework in zirconium oxide



Mix the Frame Modifier corresponding to the stain with the special liquid to a creamy consistency and apply thinly to the zirconium oxide framework. Firing temperature 970° C.

Crown after finished Frame Modifier firing.



Reduce step if required and insulate stump.







Layer stump with Margin and perform first step firing. Firing temperature 840° C.



After supplementation of the step, apply glazing fluid thinly across the entire surface and sprinkle with Margin powder. The rougher surface increases the bond. This increases light refraction and increases the depth effect. Firing temperature 830° C.



Apply the Opaque Dentine to the cervical and lingual region.



Apply Dentine layer directly on the Opaque Dentine.



Application of a Dentine-Enamel mixture, mixed at 50 % each





Model the anatomical form via transparent and cutting materials with slight over-contouring with a minimal Enamel layer. This is performed with alternate layering. Then condense the surface with a «Big-Brush». The work is now ready for the first Dentine firing at 780° C.



After the first firing without any finishing



The second firing is a pure correction firing. Only small shape corrections are performed with cutting and transparent materials. Second Dentine firing at 770° C.




**Option 1**  
The restoration can be finished with stains and glaze. This is performed at a firing temperature of 740° C, without vacuum.




**Option 2**  
Performing a «self-glaze» firing (without stains and glaze) at 785° C, without vacuum and without dwell time. Subsequent manual polishing with a suitable polishing agent is then essential to achieve the desired level of gloss.

Firing table								
(on zirconium oxide framework)	Pre-drying	Closing time	Starting temperature	1st firing	2nd firing	Temperature rise	Vacuum start	Dwell time
	min	min	°C	°C	°C	K/min	°C	min
Frame Modifier		4	450	970	960	60	450	1
Margin		4	450	840	830	45	450	1
Dentine/Enamel		4	450	780	770	45	450	1
Self-glaze		4	450	785	–	45	without	without
Glaze	3	4	450	750*	750*	55	without	1
Repair		4	450	720	–	45	450	1

 \* The firing temperature depends on the framework material and the desired degree of gloss. The firing temperature can be increased up to 810° C.

**18.17 Mounting**

The right choice of mounting options available today is crucial for a harmonious colour effect of a full ceramic restoration. Depending on the indication, restorations with Livento® press can be mounted in an adhesive, self-adhesive or conventional manner.

 Please observe correct processing according to the manufacturer's Instruction for Use enclosed in the packaging.

### Brief description of the mounting methods

#### a) Conventional mounting

In this method of mounting, attachment is virtually based only on the static friction between the restoration and the mounting material. To provide conventional mounting, a retentive preparation with a preparation angle of 4° to 6° is necessary, to achieve the highest possible static friction. Please note: in conventional mounting, the overall strength is not increased by mounting the ceramic restoration!

#### b) Adhesive mounting

In adhesive mounting, the attachment is largely based on a chemical micromechanical bond, on the one hand between the restoration and the mounting material, on the other, between the preparation and the mounting material. A micromechanical bond to dentine and enamel is created using special adhesive systems. In this type of mounting, static friction plays a subordinate role, therefore a retentive preparation is not necessary. In adhesive mounting, the overall strength is increased by mounting the ceramic restoration!

#### c) Self-adhesive mounting

In self-adhesive mounting, attachment is based on the combination of a chemical micromechanical bond and static friction. Retentive preparation is therefore recommended. As the mounting material has self-etching properties with regard to the tooth substance, no additional pretreatment of the tooth surface is necessary. Please note: in self-adhesive mounting, the overall strength of the ceramic restoration is not increased!

Type of restoration	Conventional mounting	Adhesive mounting	Self-adhesive mounting
Veneers	–	■	–
Inlays, onlays and partial crowns	–	■	–
Anterior and posterior tooth crown	■	■	■
3-pontic bridges	■	■	■



Before cementing the restoration, etch the inner surface with 5-9% hydrofluoric acid.

## 19 Materials

Livento® press	
Bending strength <sup>1</sup>	400 <sup>+/-50</sup> MPa
Transformation temperature (Tg) <sup>1</sup>	520° C
CTE (-500 °C) <sup>1</sup>	10 × 10 <sup>-6</sup> × K <sup>-1</sup> (pressed)
Classification <sup>2</sup>	Type: 2 Class: 3a
Chemical composition	Major components solidly integrated into the network of the glass ceramic include: SiO <sub>2</sub> , Al <sub>2</sub> O <sub>3</sub> , Li <sub>2</sub> O, P <sub>2</sub> O <sub>5</sub> , K <sub>2</sub> O, CaO and B <sub>2</sub> O <sub>3</sub>

Soprano® 10	
Transformation temperature (Tg) <sup>1</sup>	500° C
CTE (-500 °C) <sup>1</sup> (after 2 and 4 firings)	10 × 10 <sup>-6</sup> × K <sup>-1</sup>
Classification <sup>1</sup>	Type: 1 Class: 1b
Chemical composition	Major components solidly integrated into the network of the glass ceramic include: SiO <sub>2</sub> , Al <sub>2</sub> O <sub>3</sub> , K <sub>2</sub> O, Na <sub>2</sub> O, CaO, B <sub>2</sub> O <sub>3</sub>

<sup>1</sup> According to DIN EN ISO 6872

More detailed information on the materials as well as their compositions can be found in the product-specific material data sheets, the product information as well as the product list compiled in Section 29. All relevant documents can be found on the website [www.cmsa.ch/docs](http://www.cmsa.ch/docs) by entering the relevant product name.

## 20 Notes on storage



Insofar as no specific information on storage is given on the packaging of the product, we recommend storing the product in its original packaging, in a dry place, at room temperature and without direct sunlight. Improper storage can influence the product properties and lead to failure of the restoration.

## 21 Patient information

### 21.1 Handling / follow-up

On the day of insertion of the dentures at the latest, the patient must be informed that regular follow-up care is necessary to maintain the health of the entire masticatory system and the functionality of the denture. Ensure that the patients are motivated and instructed with regard to caring for their teeth as well as dentures.

Permanent and removable dentures are subject to considerable stress. Signs of wear are normal and cannot be avoided, only reduced. The amount of wear depends on the overall system.

Our endeavours are aimed at using materials that are as optimally matched as possible in order to reduce wear to an absolute minimum. Proper seating of the dentures on the mucosa must be checked at least once each year, and relining must be performed if required to prevent rocking movement (overload). We recommend checking the dentures at intervals of approx. 3 months initially and to replace the auxiliary parts such as retention inserts if necessary.

---

**21.2 Cleaning and care**

We recommend cleaning teeth and dentures after every meal. Cleaning of dentures includes cleaning of the connecting element. Gentlest cleaning can be achieved by cleaning the restoration under running water with a soft toothbrush and the connecting element in the mouth with an interdental brush. The most intensive cleaning of the restoration is achieved with the aid of an ultrasonic device and a cleaning additive suitable for dentures.

Never clean the high precision connecting elements with toothpaste as this could lead to damage. Caution should also be exercised in the case of aggressive cleaning agents or tablets as this could damage the high-quality connecting element or impair its function.

Regular cleaning of the anchorage can prevent inflammation of the soft tissue.

---

**22 Ordering information**

The information relevant to your order can be found in the product list in Section 29 of this document. The product information is also helpful. This and other relevant documents can be found on the website [www.cmsa.ch/docs](http://www.cmsa.ch/docs) by entering the relevant product name.

---

**23 Availability**

Some of the products described in this document may possibly not be available in all countries.

---

**24 Traceability of the lot number**

The lot numbers of all parts used must be documented to ensure traceability.

---

**25 Complaint**

Cendres+Métaux SA must be notified immediately of any incident that has occurred with regard to the product. To do this, please contact your customer advisor or send us your message by e-mail to the address [complaints-cmbrand@cmsa.ch](mailto:complaints-cmbrand@cmsa.ch). In serious cases, also send a report to the competent authority where you are domiciled.

---

**26 Safe disposal**

The products must be disposed of in accordance with local laws and environmental regulations, taking into account the level of contamination. Cendres+Métaux Lux SA would be very pleased to accept precious metal waste. For information and additional details, please contact your Cendres+Métaux SA representative.

---

**27 Trademarks**

Registered trademarks of Cendres+Métaux Holding SA, Biel/Bienne, Switzerland include:

Livento® and Soprano®

Unless explained specifically, all products marked with "®" are not registered trademarks of Cendres+Métaux Holding SA, but registered trademarks of the respective manufacturer.

---

**28 Disclaimer**

The manufacturer rejects any liability for damages resulting from non-compliance with these Instructions for Use. Cendres+Métaux SA products are parts of an overall concept and may only be used or combined with the appropriate original components and instruments. Otherwise, the manufacturer rejects any responsibility and liability. In case of complaints, please always include the lot number.

The use of third party products not distributed by Cendres+Métaux SA in connection with the products mentioned in the product list in Section 29 will void any warranty or other express or implied obligation of Cendres+Métaux SA.

Responsibility regarding the suitability of a product for the specific patient case is at the discretion of the specialist.

Cendres+Métaux SA disclaims any express or implied liability and shall not be responsible for any direct, indirect, punitive or other damages arising from or in connection with errors in professional judgement or practice in the use of Cendres+Métaux SA products.


The specialist is obliged to regularly study the latest developments of the products mentioned in the product list in Section 29 and their applications.

It should be noted that the descriptions contained in this document are not sufficient for the immediate application of Cendres+Métaux SA products. Expertise in dentistry, dental technology and instructions by an experienced specialist in the use of the products mentioned in the product list under Section 29 is always necessary.

In case of inconsistencies in translations, the English language version shall prevail.

29 Product list

All Soprano® products are assigned the basic UDI-DI: 764016651000038E8 and all Livento® and Soprano® kits are assigned the number 764016651000039EA.

 The cat. no. and the UDI-DI code of the individual products correspond to the refill item.

Cat. No.	Product name	Kit contents	Refill contents	Labelling	UDI-DI
<b>08055072</b>	<b>Soprano® 10 Livento® press Intro Kit A2</b>			CE 0483	<b>07640173094043</b>
	Livento® press LT A1	3 pcs.			
	Livento® press MT A2	3 pcs.			
	Soprano® 10 Margin A2	5 g			
	Soprano® 10 Opaque Dentine A2	5 g			
	Soprano® 10 Dentine A2	5 g			
	Soprano® 10 Mamelon cream	5 g			
	Soprano® 10 Enamel E2	5 g			
	Soprano® 10 Enamel Effect light-blue	5 g			
	Soprano® 10 Opal Effect	5 g			
	Soprano® Flu-Shade A	5 g			
	Soprano® Flu-Stain dark-blue	5 g			
	Soprano® Flu-Stain brown	5 g			
	Soprano® Glaze Paste	5 g			
	Soprano® Stains & Glaze Fluid	25 ml			
	Soprano® Modeling Liquid	25 ml			
	Livento® invest Powder	5 x 100 g			
	Livento® invest Liquid	250 ml			
	Livento® press Disposable Pressplunger 13mm	5 pcs.			
<b>08055073</b>	<b>Livento® press Soprano® 10 Shade A-B Kit</b>			CE 0483	<b>07640173094203</b>
08055142	Livento® press LT A0	3 pcs.	5 pcs.	CE 0483	07640173094210
08055137	Livento® press LT A1	3 pcs.	5 pcs.	CE 0483	07640173094050
08055143	Livento® press LT A2	3 pcs.	5 pcs.	CE 0483	07640173094197
08055144	Livento® press LT A3	3 pcs.	5 pcs.	CE 0483	07640173094227
08055145	Livento® press LT A3.5	3 pcs.	5 pcs.	CE 0483	07640173094234
08055146	Livento® press LT A4	3 pcs.	5 pcs.	CE 0483	07640173094241
08055147	Livento® press LT B1	3 pcs.	5 pcs.	CE 0483	07640173094258
08055148	Livento® press LT B2	3 pcs.	5 pcs.	CE 0483	07640173094265
08055149	Livento® press LT B3	3 pcs.	5 pcs.	CE 0483	07640173094272
08055150	Livento® press LT B4	3 pcs.	5 pcs.	CE 0483	07640173094289
08055158	Livento® press MT A0	3 pcs.	5 pcs.	CE 0483	07640173093763
08055159	Livento® press MT A1	3 pcs.	5 pcs.	CE 0483	07640173094296
08055160	Livento® press MT A2	3 pcs.	5 pcs.	CE 0483	07640173094067
08055161	Livento® press MT A3	3 pcs.	5 pcs.	CE 0483	07640173094302
08055162	Livento® press MT B1	3 pcs.	5 pcs.	CE 0483	07640173094319
08055163	Livento® press MT B2	3 pcs.	5 pcs.	CE 0483	07640173094326
08055141	Livento® press HO 1	3 pcs.	5 pcs.	CE 0483	07640173094340
08055169	Livento® press Bleach 1 MT	3 pcs.	3 pcs.	CE 0483	07640173094357
08055185	Soprano® 10 Frame Modifier A	5 g	5 g	CE 0483	07640173093770
08055186	Soprano® 10 Frame Modifier B	5 g	5 g	CE 0483	07640173094364
08055187	Soprano® 10 Margin A0	5 g	5 g	CE 0483	07640173094371
08055173	Soprano® 10 Margin A2	5 g	5 g	CE 0483	07640173094074
08055188	Soprano® 10 Margin A4	5 g	5 g	CE 0483	07640173094388
08055189	Soprano® 10 Margin B2	5 g	5 g	CE 0483	07640173094395
08055190	Soprano® 10 Margin C2	5 g	5 g	CE 0483	07640173094401
08055191	Soprano® 10 Opaque Dentine A0	15 g	15 g	CE 0483	07640173094418
08055192	Soprano® 10 Opaque Dentine A1	15 g	15 g	CE 0483	07640173094425
08055176	Soprano® 10 Opaque Dentine A2	15 g	15 g	CE 0483	07640173094081
08055193	Soprano® 10 Opaque Dentine A3	15 g	15 g	CE 0483	07640173094432
08055194	Soprano® 10 Opaque Dentine A3.5	15 g	15 g	CE 0483	07640173094449
08055195	Soprano® 10 Opaque Dentine A4	15 g	15 g	CE 0483	07640173094456
08055196	Soprano® 10 Opaque Dentine B0	15 g	15 g	CE 0483	07640173094463
08055197	Soprano® 10 Opaque Dentine B1	15 g	15 g	CE 0483	07640173094470
08055198	Soprano® 10 Opaque Dentine B2	15 g	15 g	CE 0483	07640173094487
08055199	Soprano® 10 Opaque Dentine B3	15 g	15 g	CE 0483	07640173094494
08055200	Soprano® 10 Opaque Dentine B4	15 g	15 g	CE 0483	07640173094500
08055201	Soprano® 10 Opaque Dentine orange	15 g	15 g	CE 0483	07640173094517
08055202	Soprano® 10 Opaque Dentine brown	15 g	15 g	CE 0483	07640173094524
08055203	Soprano® 10 Opaque Dentine yellow	15 g	15 g	CE 0483	07640173094531
08055204	Soprano® 10 Dentine A0	15 g	15 g	CE 0483	07640173094548
08057760	Soprano® 10 Dentine A0		25 g	CE 0483	07640173096320
08055205	Soprano® 10 Dentine A1	15 g	15 g	CE 0483	07640173094555
08057763	Soprano® 10 Dentine A1		25 g	CE 0483	07640173096337
08058760	Soprano® 10 Dentine A1		40 g	CE 0483	07640239932319
08055177	Soprano® 10 Dentine A2	15 g	15 g	CE 0483	07640173094098
08057764	Soprano® 10 Dentine A2		25 g	CE 0483	07640173096344
08058761	Soprano® 10 Dentine A2		40 g	CE 0483	07640239932326
08055206	Soprano® 10 Dentine A3	15 g	15 g	CE 0483	07640173094562

Cat. No.	Product name	Kit contents	Refill contents	Labelling	UDI-DI
08058762	Soprano® 10 Dentine A3		25 g	CE 0483	07640239932333
08058763	Soprano® 10 Dentine A3		40 g	CE 0483	07640239932340
08055207	Soprano® 10 Dentine A3.5	15 g	15 g	CE 0483	07640173094579
08058764	Soprano® 10 Dentine A3,5		25 g	CE 0483	07640239932357
08058765	Soprano® 10 Dentine A3,5		40 g	CE 0483	07640239932364
08055208	Soprano® 10 Dentine A4	15 g	15 g	CE 0483	07640173094586
08055209	Soprano® 10 Dentine B0	15 g	15 g	CE 0483	07640173094593
08057765	Soprano® 10 Dentine B0		25 g	CE 0483	07640173096351
08055210	Soprano® 10 Dentine B1	15 g	15 g	CE 0483	07640173094609
08057768	Soprano® 10 Dentine B1		25 g	CE 0483	07640173096368
08058766	Soprano® 10 Dentine B1		40 g	CE 0483	07640239932371
08055211	Soprano® 10 Dentine B2	15 g	15 g	CE 0483	07640173094616
08058767	Soprano® 10 Dentine B2		25 g	CE 0483	07640239932388
08058768	Soprano® 10 Dentine B2		40 g	CE 0483	07640239932395
08055212	Soprano® 10 Dentine B3	15 g	15 g	CE 0483	07640173094623
08055213	Soprano® 10 Dentine B4	15 g	15 g	CE 0483	07640173094630
08055214	Soprano® 10 Enamel E1	25 g	25 g	CE 0483	07640173094647
08057769	Soprano® 10 Enamel E1		40 g	CE 0483	07640173096375
08057770	Soprano® 10 Enamel E1		100 g	CE 0483	07640173096382
08055215	Soprano® 10 Enamel E2	25 g	25 g	CE 0483	07640173094111
08057771	Soprano® 10 Enamel E2		40 g	CE 0483	07640173096399
08057772	Soprano® 10 Enamel E2		100 g	CE 0483	07640173096405
08055216	Soprano® 10 Enamel E3	25 g	25 g	CE 0483	07640173094654
08055217	Soprano® 10 Enamel E4	25 g	25 g	CE 0483	07640173094661
08055218	Soprano® 10 Enamel Clear	25 g	25 g	CE 0483	07640173094678
08055180	Soprano® 10 Opal Effect	15 g	15 g	CE 0483	07640173094135
08055219	Soprano® 10 Opal Intensive 2	15 g	15 g	CE 0483	07640173094685
08055220	Soprano® 10 Opal Intensive 4	15 g	15 g	CE 0483	07640173094692
08055221	Soprano® 10 Opal Clear	15 g	15 g	CE 0483	07640173094715
08055222	Soprano® 10 Enamel Effect clear-white	15 g	15 g	CE 0483	07640173094722
08055223	Soprano® 10 Enamel Effect sun	15 g	15 g	CE 0483	07640173094739
08055224	Soprano® 10 Enamel Effect apricot	15 g	15 g	CE 0483	07640173094746
08055225	Soprano® 10 Enamel Effect amber	15 g	15 g	CE 0483	07640173094753
08055226	Soprano® 10 Enamel Effect gray	15 g	15 g	CE 0483	07640173094760
08055179	Soprano® 10 Enamel Effect light-blue	15 g	15 g	CE 0483	07640173094128
08055227	Soprano® 10 Enamel Enhancer orange	15 g	15 g	CE 0483	07640173094777
08055228	Soprano® 10 Mamelon mango	15 g	15 g	CE 0483	07640173094784
08055178	Soprano® 10 Mamelon cream	15 g	15 g	CE 0483	07640173094104
08055229	Soprano® 10 Repair	15 g	15 g	CE 0483	07640173094708
08055284	Soprano® Frame Liquid	25 ml	25 ml	NO MED	07640173095736
08055277	Soprano® Modeling Liquid	100 ml	100 ml	NO MED	07640173095712
08055283	Soprano® Stains & Glaze Fluid	25 ml	25 ml	CE 0483	07640173095729
<b>08055074</b>	<b>Livento® press Soprano® 10 Shade C-D Kit</b>			CE 0483	<b>07640173094791</b>
08055151	Livento® press LT C1	3 pcs.	3 pcs.	CE 0483	07640173094807
08055152	Livento® press LT C2	3 pcs.	3 pcs.	CE 0483	07640173094814
08055153	Livento® press LT C3	3 pcs.	3 pcs.	CE 0483	07640173094821
08055154	Livento® press LT C4	3 pcs.	3 pcs.	CE 0483	07640173094838
08055155	Livento® press LT D2	3 pcs.	3 pcs.	CE 0483	07640173094845
08055156	Livento® press LT D3	3 pcs.	3 pcs.	CE 0483	07640173094852
08055157	Livento® press LT D4	3 pcs.	3 pcs.	CE 0483	07640173094869
08055164	Livento® press MT C1	3 pcs.	3 pcs.	CE 0483	07640173094333
08055165	Livento® press MT C2	3 pcs.	3 pcs.	CE 0483	07640173094876
08055166	Livento® press MT D2	3 pcs.	3 pcs.	CE 0483	07640173094883
08055326	Soprano® 10 Frame Modifier C	5 g	5 g	CE 0483	07640173094890
08055230	Soprano® 10 Frame Modifier D	5 g	5 g	CE 0483	07640173094906
08055231	Soprano® 10 Opaque Dentine C1	15 g	15 g	CE 0483	07640173094913
08055232	Soprano® 10 Opaque Dentine C2	15 g	15 g	CE 0483	07640173094920
08055233	Soprano® 10 Opaque Dentine C3	15 g	15 g	CE 0483	07640173094937
08055234	Soprano® 10 Opaque Dentine C4	15 g	15 g	CE 0483	07640173094944
08055235	Soprano® 10 Opaque Dentine D2	15 g	15 g	CE 0483	07640173094951
08055236	Soprano® 10 Opaque Dentine D3	15 g	15 g	CE 0483	07640173094968
08055237	Soprano® 10 Opaque Dentine D4	15 g	15 g	CE 0483	07640173095774
08055238	Soprano® 10 Dentine C1	15 g	15 g	CE 0483	07640173094975
08055239	Soprano® 10 Dentine C2	15 g	15 g	CE 0483	07640173094982
08055240	Soprano® 10 Dentine C3	15 g	15 g	CE 0483	07640173094999
08055241	Soprano® 10 Dentine C4	15 g	15 g	CE 0483	07640173095002
08055242	Soprano® 10 Dentine D2	15 g	15 g	CE 0483	07640173095019
08055243	Soprano® 10 Dentine D3	15 g	15 g	CE 0483	07640173095026
08055244	Soprano® 10 Dentine D4	15 g	15 g	CE 0483	07640173095033
	<b>Soprano® 10 Gingiva</b>				
08057773	Soprano® 10 Frame Modifier pink		5 g	CE 0483	07640173096412
08058200	Soprano® 10 Gingiva light		5 g	CE 0483	07640239930032
08058742	Soprano® 10 Gingiva light		15 g	CE 0483	07640239932135
08058743	Soprano® 10 Gingiva light		25 g	CE 0483	07640239932142



Cat. No.	Product name	Kit contents	Refill contents	Labelling	UDI-DI
08058744	Soprano® 10 Gingiva light		40 g	CE 0483	07640239932159
08055260	Soprano® 10 Gingiva dark		5 g	CE 0483	07640173095217
08058745	Soprano® 10 Gingiva dark		15 g	CE 0483	07640239932166
08058746	Soprano® 10 Gingiva dark		25 g	CE 0483	07640239932173
08058747	Soprano® 10 Gingiva dark		40 g	CE 0483	07640239932180
08058748	Soprano® 10 Gingiva dark-intense		15 g	CE 0483	07640239932197
08058749	Soprano® 10 Gingiva dark-intense		25 g	CE 0483	07640239932203
08058750	Soprano® 10 Gingiva dark-intense		40 g	CE 0483	07640239932210
08058201	Soprano® 10 Gingiva orange		5 g	CE 0483	07640239930049
08058751	Soprano® 10 Gingiva orange		15 g	CE 0483	07640239932227
08058752	Soprano® 10 Gingiva orange		25 g	CE 0483	07640239932234
08055261	Soprano® 10 Gingiva violet		5 g	CE 0483	07640173095224
08058753	Soprano® 10 Gingiva violet		15 g	CE 0483	07640239932241
08058754	Soprano® 10 Gingiva violet		25 g	CE 0483	07640239932258
08058755	Soprano® 10 Gingiva brown		15 g	CE 0483	07640239932265
08058756	Soprano® 10 Gingiva brown		25 g	CE 0483	07640239932272
08058757	Soprano® 10 Gingiva blood		15 g	CE 0483	07640239932289
08058758	Soprano® 10 Gingiva blood		25 g	CE 0483	07640239932296
08058759	Soprano® 10 Gingiva bone		25 g	CE 0483	07640239932302
<b>08055077</b>	<b>Livento® press Soprano® 10 Advanced Kit</b>			CE 0483	<b>07640173095255</b>
08055138	Livento® press ET 1	3 pcs.	5 pcs.	CE 0483	07640173095262
08055139	Livento® press ET 2	3 pcs.	5 pcs.	CE 0483	07640173095279
08055140	Livento® press ET 3	3 pcs.	5 pcs.	CE 0483	07640173095286
08055167	Livento® press Opal 1	3 pcs.	3 pcs.	CE 0483	07640173095293
08055168	Livento® press Opal 2	3 pcs.	3 pcs.	CE 0483	07640173095309
08055268	Soprano® 10 Enamel E0	5 g	5 g	CE 0483	07640173095316
08055269	Soprano® 10 Opal Intensive 1	5 g	5 g	CE 0483	07640173095323
08055270	Soprano® 10 Opal Intensive 3	5 g	5 g	CE 0483	07640173095330
08055271	Soprano® 10 Enamel Effect Enh. amber	5 g	5 g	CE 0483	07640173095347
08055272	Soprano® 10 Enamel Effect Enh. dark-gray	5 g	5 g	CE 0483	07640173095354
08055273	Soprano® 10 Enamel Effect Enh. pink	5 g	5 g	CE 0483	07640173095361
08055274	Soprano® 10 Enamel Effect Enh. blue	5 g	5 g	CE 0483	07640173095378
08055275	Soprano® 10 Cuspid	5 g	5 g	CE 0483	07640173095385
08055276	Soprano® 10 Fossa	5 g	5 g	CE 0483	07640173095392
<b>08056952</b>	<b>Livento® Soprano® 10 Bleaching Extended Kit</b>			CE 0483	<b>07640173095484</b>
08056950	Livento® press Bleach ET	3 pcs.	5 pcs.	CE 0483	07640173095491
08056942	Livento® press Bleach 1 MT	3 pcs.	5 pcs.	CE 0483	07640173095507
08056943	Livento® press Bleach 2 MT	3 pcs.	5 pcs.	CE 0483	07640173095514
08056944	Livento® press Bleach 3 MT	3 pcs.	5 pcs.	CE 0483	07640173095521
08056945	Livento® press Bleach 4 MT	3 pcs.	5 pcs.	CE 0483	07640173095538
08056946	Livento® press Bleach 1 LT	3 pcs.	5 pcs.	CE 0483	07640173095545
08056947	Livento® press Bleach 2 LT	3 pcs.	5 pcs.	CE 0483	07640173095552
08056948	Livento® press Bleach 3 LT	3 pcs.	5 pcs.	CE 0483	07640173095569
08056949	Livento® press Bleach 4 LT	3 pcs.	5 pcs.	CE 0483	07640173095576
08056954	Livento® press Bleach MO 0	3 pcs.	5 pcs.	CE 0483	07640173095583
08056955	Livento® press Bleach MO 1	3 pcs.	5 pcs.	CE 0483	07640173095590
08056951	Livento® press Bleach HO 0	3 pcs.	5 pcs.	CE 0483	07640173095606
08056953	Soprano® 10 Bleach Opaque Dentine	15 g	15 g	CE 0483	07640173095613
08056956	Soprano® 10 Bleach Dentine 1	25 g	25 g	CE 0483	07640173095620
08057774	Soprano® 10 Bleach Dentine 1		40 g	CE 0483	07640173096429
08057775	Soprano® 10 Bleach Dentine 1		100 g	CE 0483	07640173096436
08056957	Soprano® 10 Bleach Dentine 2	25 g	25 g	CE 0483	07640173095637
08057776	Soprano® 10 Bleach Dentine 2		40 g	CE 0483	07640173096443
08057777	Soprano® 10 Bleach Dentine 2		100 g	CE 0483	07640173096450
08056958	Soprano® 10 Bleach Dentine 3	25 g	25 g	CE 0483	07640173095644
08057766	Soprano® 10 Bleach Dentine 3		40 g	CE 0483	07640173096467
08057767	Soprano® 10 Bleach Dentine 3		100 g	CE 0483	07640173096474
08056959	Soprano® 10 Bleach Dentine 4	25 g	25 g	CE 0483	07640173095651
08057761	Soprano® 10 Bleach Dentine 4		40 g	CE 0483	07640173096481
08057762	Soprano® 10 Bleach Dentine 4		100 g	CE 0483	07640173096498
08056960	Soprano® 10 Cuspid	15 g	15 g	CE 0483	07640173095668
08056961	Soprano® 10 Bleach Enamel 1	25 g	25 g	CE 0483	07640173095675
08057778	Soprano® 10 Bleach Enamel 1		40 g	CE 0483	07640173096504
08057779	Soprano® 10 Bleach Enamel 1		100 g	CE 0483	07640173096511
08056962	Soprano® 10 Bleach Enamel 2	25 g	25 g	CE 0483	07640173095682
08057780	Soprano® 10 Bleach Enamel 2		40 g	CE 0483	07640173096528
08057781	Soprano® 10 Bleach Enamel 2		100 g	CE 0483	07640173096535
08056963	Soprano® 10 Enamel EO	25 g	25 g	CE 0483	07640173095699
08057782	Soprano® 10 Enamel EO		40 g	CE 0483	07640173096542
08057783	Soprano® 10 Enamel EO		100 g	CE 0483	07640173096559
08055214	Soprano® 10 Enamel E1	25 g	25 g	CE 0483	07640173094647
08055218	Soprano® 10 Enamel Clear	25 g	25 g	CE 0483	07640173094678
08056964	Soprano® 10 Bleach Transpa-white	15 g	15 g	CE 0483	07640173095705
08055179	Soprano® 10 Enamel Effect light-blue	15 g	15 g	CE 0483	07640173094128

Cat. No.	Product name	Kit contents	Refill contents	Labelling	UDI-DI
08055219	Soprano® 10 Opal Intensive 2	15 g	15 g	CE 0483	07640173094685
08055178	Soprano® 10 Mamelon cream	15 g	15 g	CE 0483	07640173094104
08055277	Soprano® Modeling Liquid	100 ml	100 ml	NO MED	07640173095712
08055283	Soprano® Stains & Glaze Fluid	25 ml	25 ml	CE 0483	07640173095729
08055184	Soprano® Glaze Paste	5 g	5 g	CE 0483	07640173094173





## 30 Labelling on packaging/symbols



Date of manufacture



Manufacturer



Catalogue number



Lot number



Quantity

[www.cmsa.ch/docs](http://www.cmsa.ch/docs)

Observe the Instructions for Use, which are available in electronic form at the address specified.

Rx only

Attention: According to US federal law, this product may only be sold by or on behalf of a physician.



Cendres+Métaux products with CE labelling meet the requirements of the relevant European requirements.



Do not re-use



Non-sterile



Protect from sunlight



Attention, observe accompanying documents



Clear product identification



European Authorised Representative



Importer



Medical device

